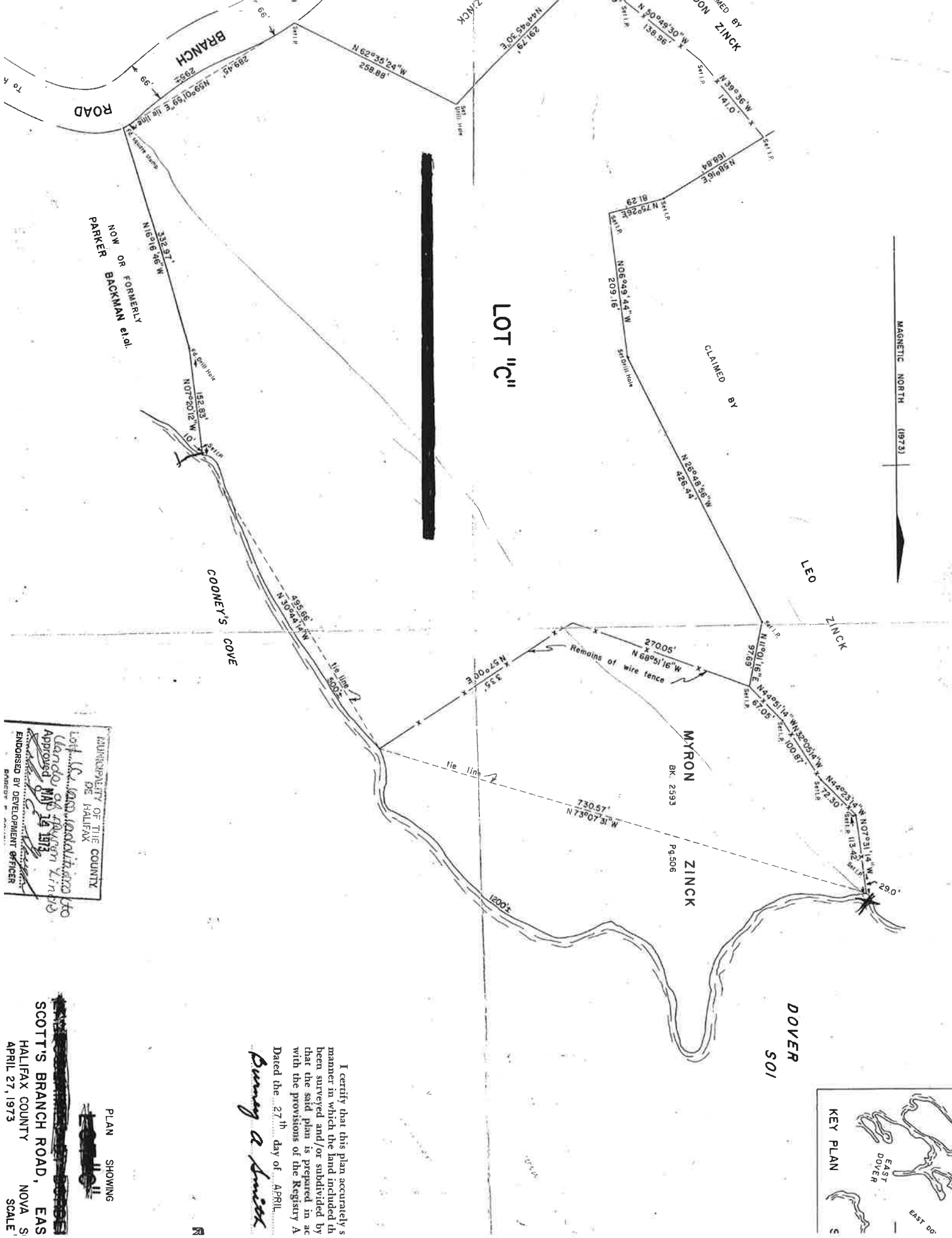
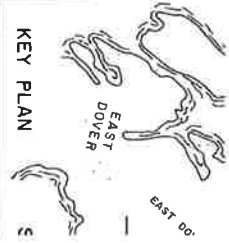


MAGNETIC NORTH (1973)



LOT "C"

COONEY'S COVE

DOVER SOI

MYRON BK. 2593

ZINCK P4506

PARKER OR FORMERLY BACKMAN a lot.

I certify that this plan accurately s
manner in which the land included th
been surveyed and/or subdivided by
that the said plan is prepared in ac
with the provisions of the Registry A
Dated the 27th day of APRIL
Burney A Smith

LAND REGISTRY OF THE COUNTY OF HALIFAX
APPROVED
MADE PUBLIC
APPROVED
MADE PUBLIC
APPROVED
MADE PUBLIC

PLAN SHOWING
SCOTT'S BRANCH ROAD, EAST
HALIFAX COUNTY
APRIL 27, 1973
SCALE